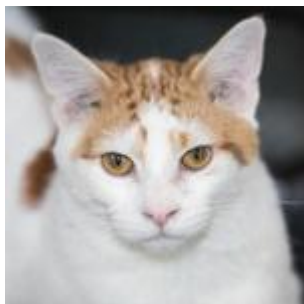
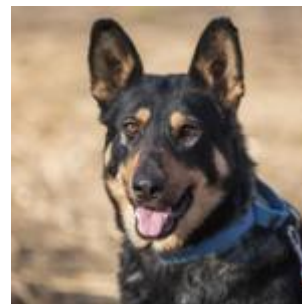




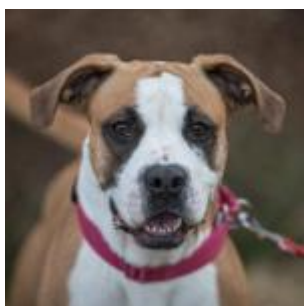
COMPANION ANIMALS SERVED



*Live Intake + Beginning Population	2018
Cats & Kittens	1628
Dogs & Puppies	998
Total	2626



Pets Adopted	2018
Cats and Kittens	1363
Dogs and Puppies	614
Total	1977



Pets Reunited	2018
Cats and Kittens	44
Dogs and Puppies	197
Total	241



Pets Transferred/TNR	2018
Cats and Kittens	66
Dogs and Puppies	53
Total	119

Total number of pets saved 2337

Live release rate* 89%

Of the 203 dogs and cats that were humanely euthanized, 45% had serious behavior issues, such as aggression or extreme under socialization; 55% has serious medical issues or severe injuries.

*Live Release Rate does not include 47 owner/guardian requested euthanasia which were unhealthy & untreatable and 55 animals that died in the shelter/care. The 'Live Release Rate' is calculated by dividing the 'Adjusted Live Intake + Beginning Population' into 'Total number of pets saved'.